



**PARIS
MASH
MEETING**

11th edition

**September 11 & 12, 2025
Institut Pasteur, Paris**



Implications of global policies on non-communicable diseases for patients with MASLD



**Institute of Liver & Biliary Sciences
A Deemed Liver University, New Delhi, India**

- **Dr. S K Sarin**
- **sksarin@ilbs.in**



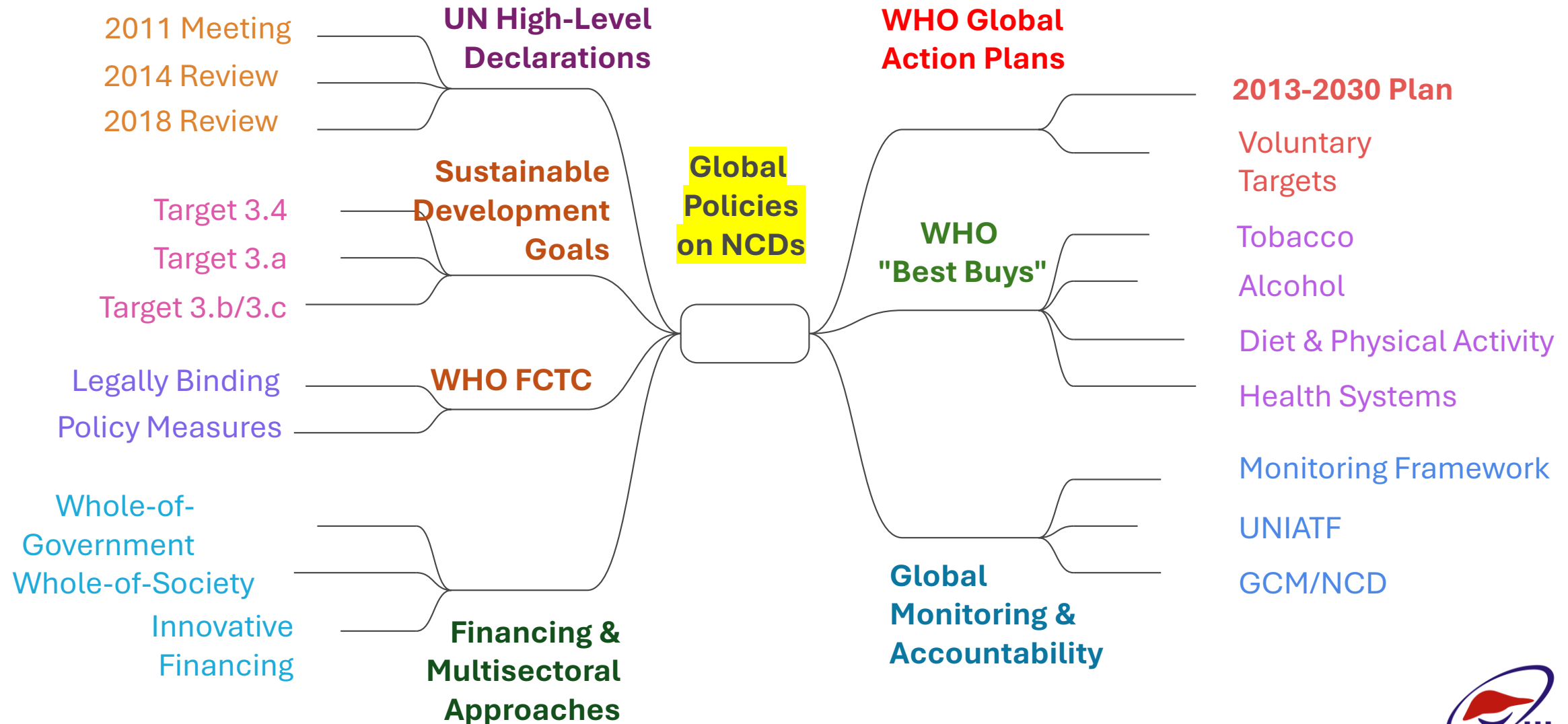
Disclosure

I have no conflict of Interest or disclosures to make

Implications of global policies on NCDs for patients with MASLD

- **Policy Gaps in NCD guidelines**
- Action by India: NAFLD in NCDs
- Global: Outcome Measures

Global Policies on Non-Communicable Diseases



1. Key Finding: A Critical Policy Gap

- Despite MASLD affecting 1.5 billion, it is absent from global NCD strategies and action plans.
- WHO NCD Action Plan (2013-30) recognizes 4 NCDs: CVD, Cancer, respiratory diseases, diabetes, and mental illness
- MASLD unknown outside hepatology and GE

Implications

- **Policy Development:** NAFLD absent from agendas and preparedness index amongst 102 countries.
- Only 1/3rd countries had national NAFLD guidelines.
- **No Fund Allocation:** for MASLD research and care.

https://www.researchgate.net/publication/347518285_Fatty_liver_disease_is_a_neglected_noncommunicable_disease_in_world_health_organization_global_action_plan_for_prevention_and_control_of_non-communicable_diseases_2013-2020_A_call_for_policy_action

<https://pmc.ncbi.nlm.nih.gov/articles/PMC10660806/>

2. Health System Barriers and Care Fragmentation

- **Primary Care Challenges:** Don't understand MASLD
- **Physician Knowledge Gaps:** US nationwide survey, across specialties, barrier to a diagnosis was uncertainty regarding treatment approach

<https://pmc.ncbi.nlm.nih.gov/articles/PMC10573476/>

- **No Reimbursement to physicians:** for patient education, medical education, management of MASLD

<https://www.frontiersin.org/journals/medicine/articles/10.3389/fmed.2024.1407389/full>

<https://pmc.ncbi.nlm.nih.gov/articles/PMC11309125/>

3. Screening and Diagnostic Policy Gaps

- **Lack of Systematic Screening:**

General population, with or without alcohol,

Assessment of Stage of liver fibrosis, elevated liver enzymes

- **Care Pathway Inconsistencies:** how diagnosis may change management and outcomes. Fragmented care approaches
- **Technology Access:** Transient elastography in primary care

13 May 2025

Zero draft: Political declaration of the fourth high-level meeting of the UN General...

- No mention of MAFLD/MASLD/NAFLD
 - No broader liver care commitments
-
- On 25.09.25: UNGA set for a new vision for the prevention and control of NCDs.

Implications of global policies on NCDs for patients with MASLD

- Policy Gaps in NCD guidelines
- **Action by India: NAFLD in NCDs**
- Global: Outcome Measures

India Leads on MASLD Policy Initiatives

Global Policies on NCDs for MASLD: 5 'Ps'

Patient

- Identification, Co-morbid risks, Stigma, Change life-style,
- Drugs, Cost
- 'Basket Trials' : Liver, CVD, ..
- Simple educational courses
- Involve affected populations

Public

- *Reconsider terminology*
Fatty liver/MASLD ?
- Whole of society approach
- Change in behavior, life style
- Develop guidelines, policy briefs and action plans

MASLD/Fatty Liver Global Public Health Agenda

Policy

- *Reconsider terminology*
- *Fatty Liver/ MASLD: Money*
- Calculate human and economic burden of NCDs
- *Integrate ALL metabolic, NCDs with Liver*
- *Incorporate NAFLD on NCDs*
- *Laws, Warnings*

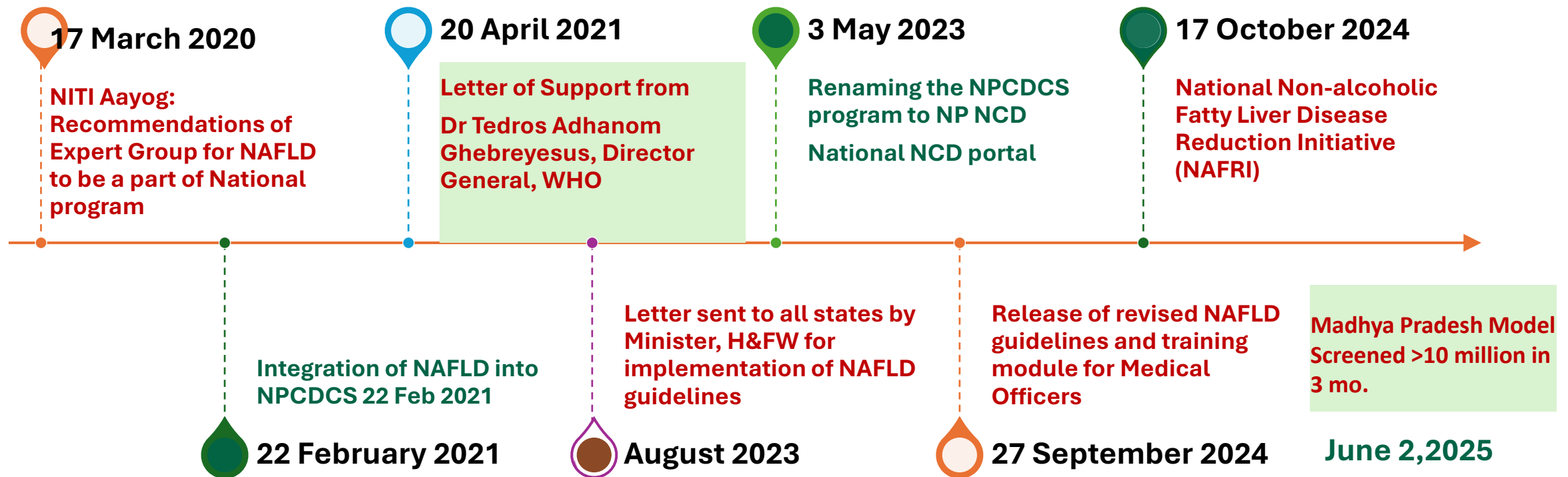
Pharma

- *Standardize trial end points*
- *Effective Rx: obesity, MASLD*
- Access
- Regional needs

Physicians

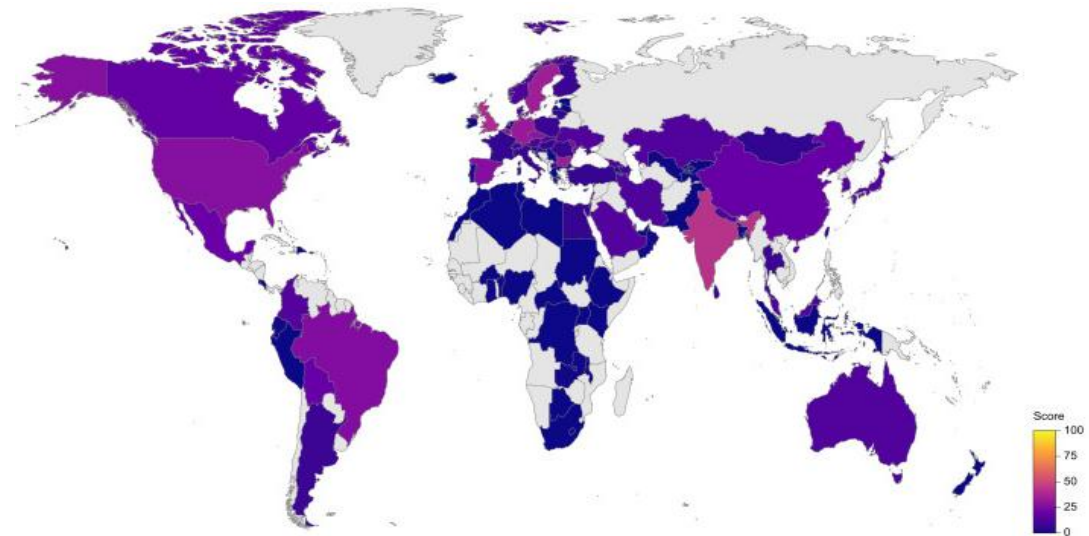
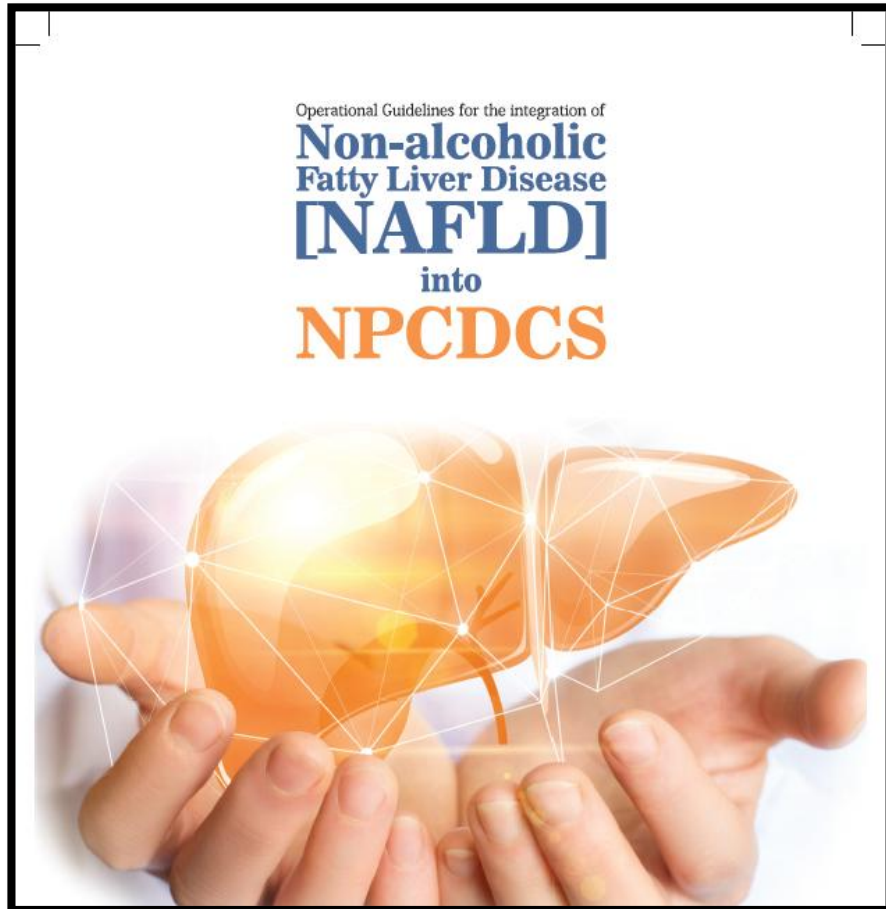
- Design and implement local care pathways
- Collaborate across disciplines,
- Develop common tools
- Implementation research

Tackling NAFLD in India (Snapshot)

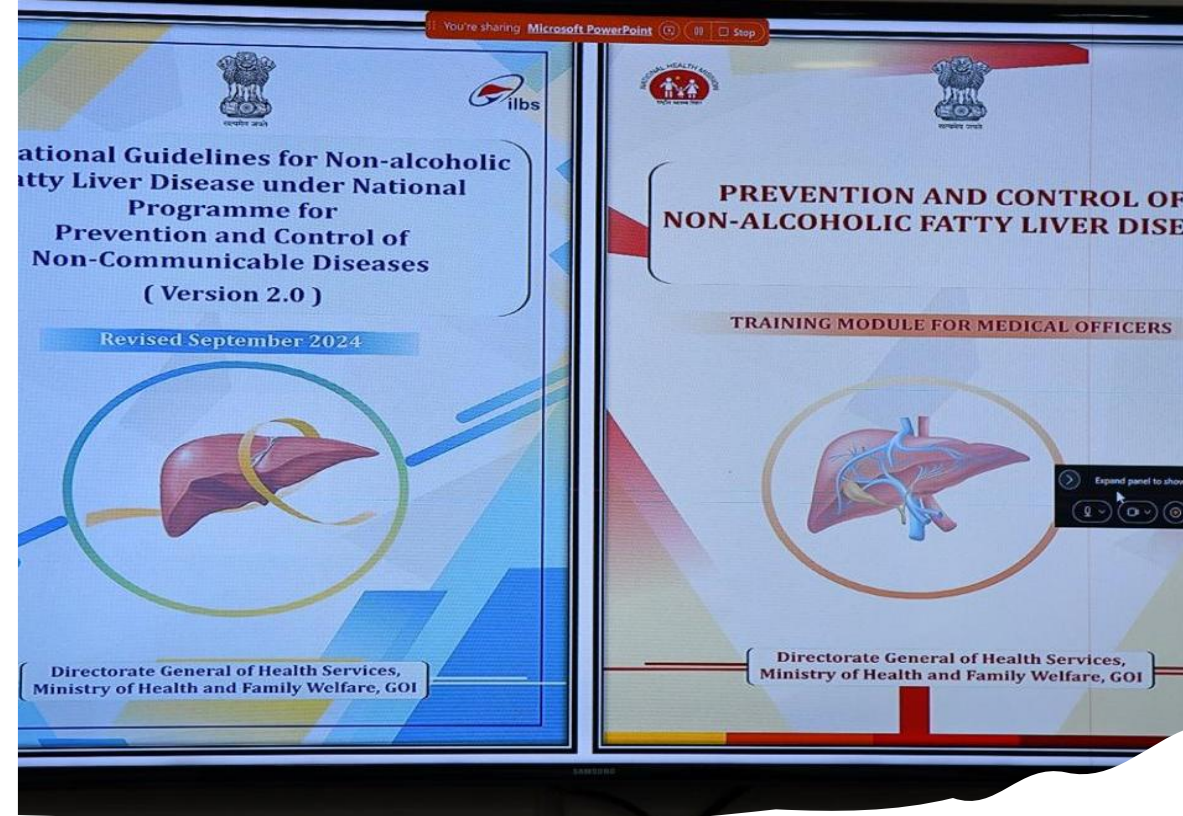


Groundbreaking initiative by India : Integration of NAFLD into NPCDCS, 22 Feb 2021

National Programme for Prevention and Control of Diabetes, CVDs and Stroke in India



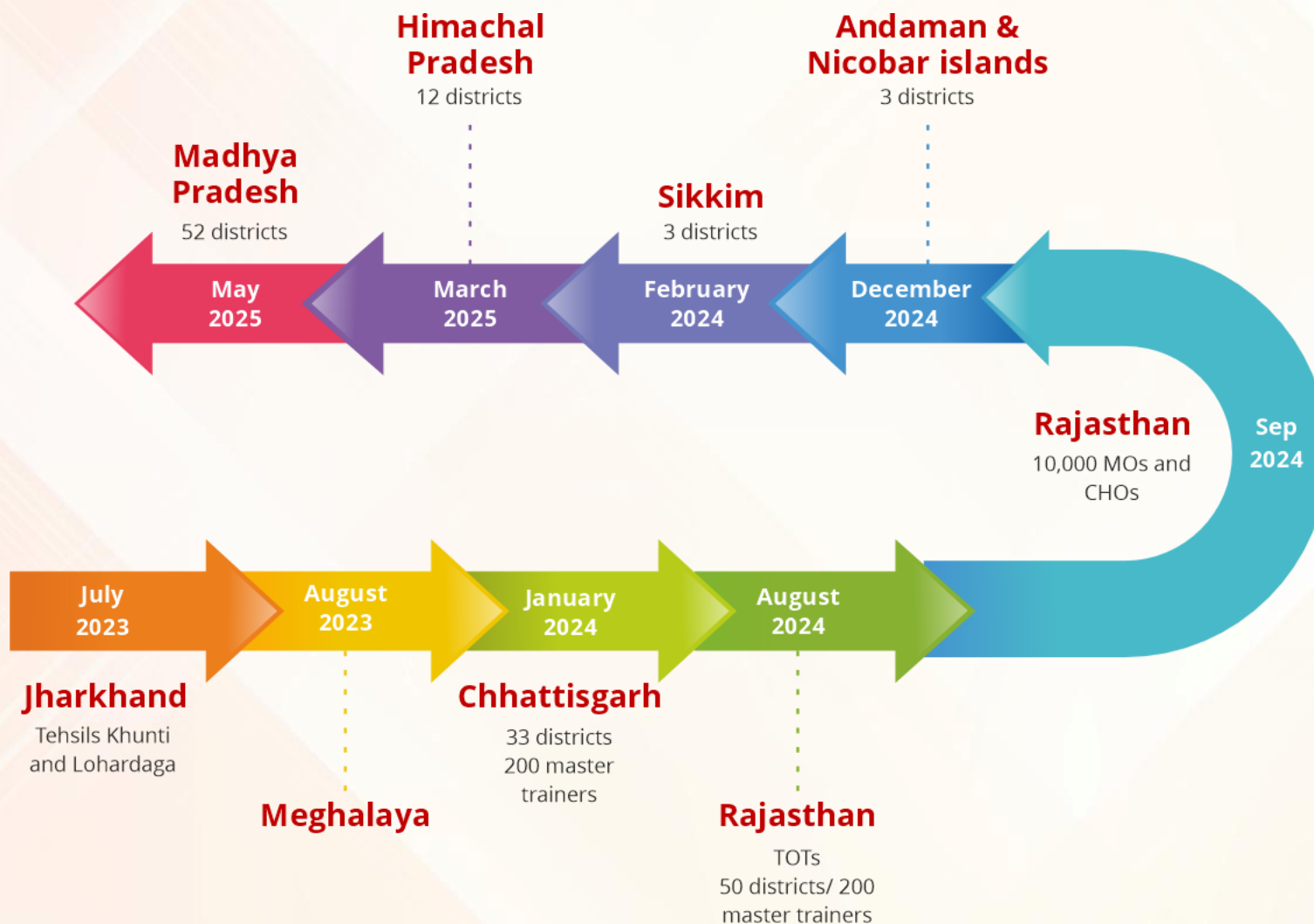
Fatty Liver Preparedness Scores for 102 countries: India at *numero uno*



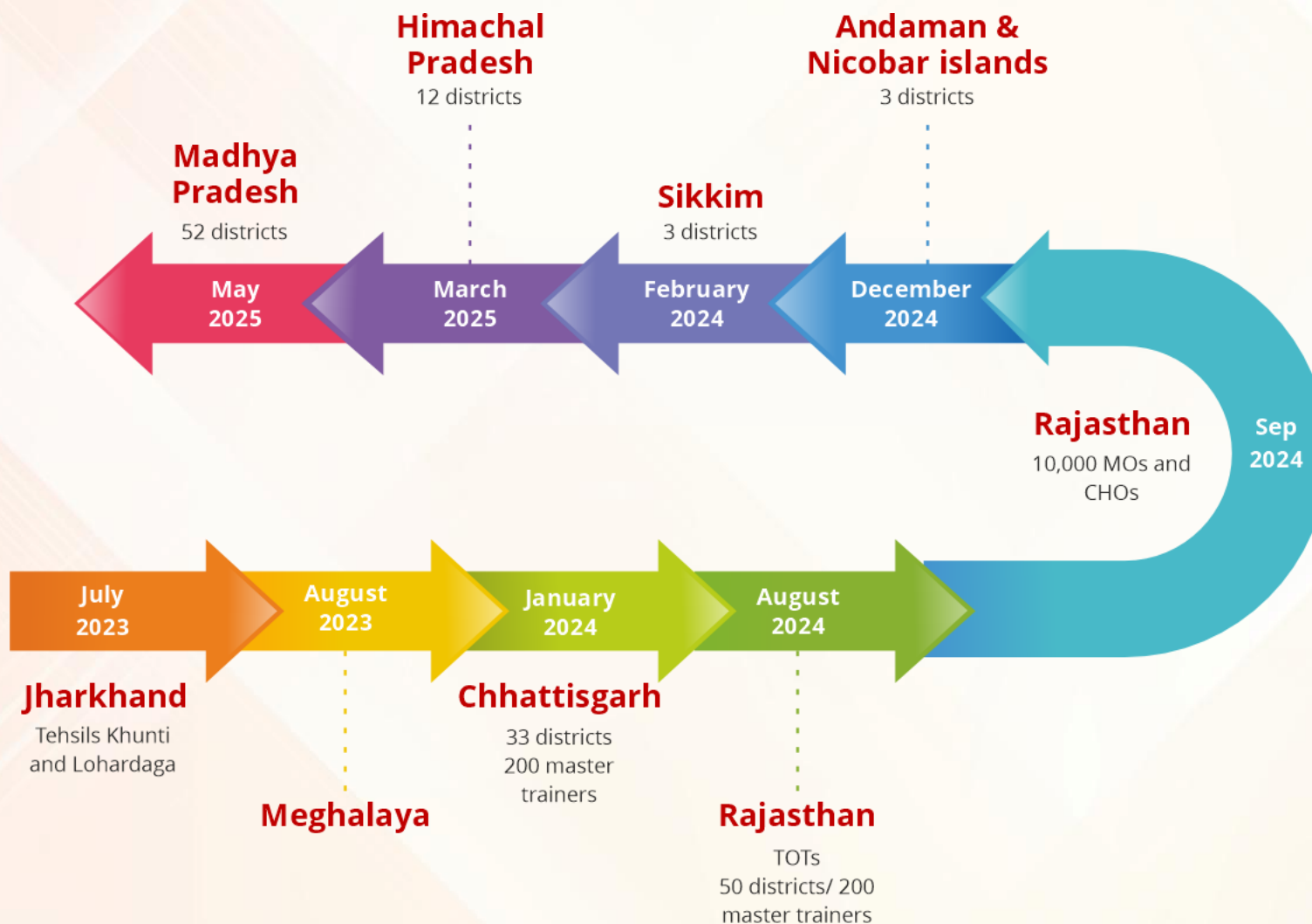
27th September 2024

Release of V2 NAFLD guidelines and Training module for MOs

ILBS supporting states for implementation of NAFLD guidelines



ILBS supporting states for implementation of NAFLD guidelines



**11.8 million screened for NAFLD, June 1, 2025
'SWASTH YAKRIT' – 'HEALTHY LIVER' MISSION**



Global Policies on NCDs for MASLD: 5 'Ps'

Patient

- Identification, Co-morbid risks, Stigma, Change life-style,
- Drugs, Cost
- 'Basket Trials' : Liver, CVD, ..
- Simple educational courses
- Involve affected populations

Public

- *Reconsider terminology Fatty liver/MASLD ?*
- Whole of society approach
- Change in behavior, life style
- Develop guidelines, policy briefs and action plans

MASLD/Fatty Liver Global Public Health Agenda

Policy

- *Reconsider terminology*
- *Fatty Liver/ MASLD: Money*
- Calculate human and economic burden of NCDs
- *Integrate ALL metabolic, NCDs with Liver*
- *Incorporate NAFLD on NCDs*
- Laws, Warnings

Pharma

- Standardize trial end points
- Effective Rx: obesity, MASLD
- Access
- Regional needs

Physicians

- Design and implement local care pathways
- Collaborate across disciplines,
- Develop common tools
- Implementation research

Fatty Liver is associated with Increased risk of NCDs : How to connect policies ?

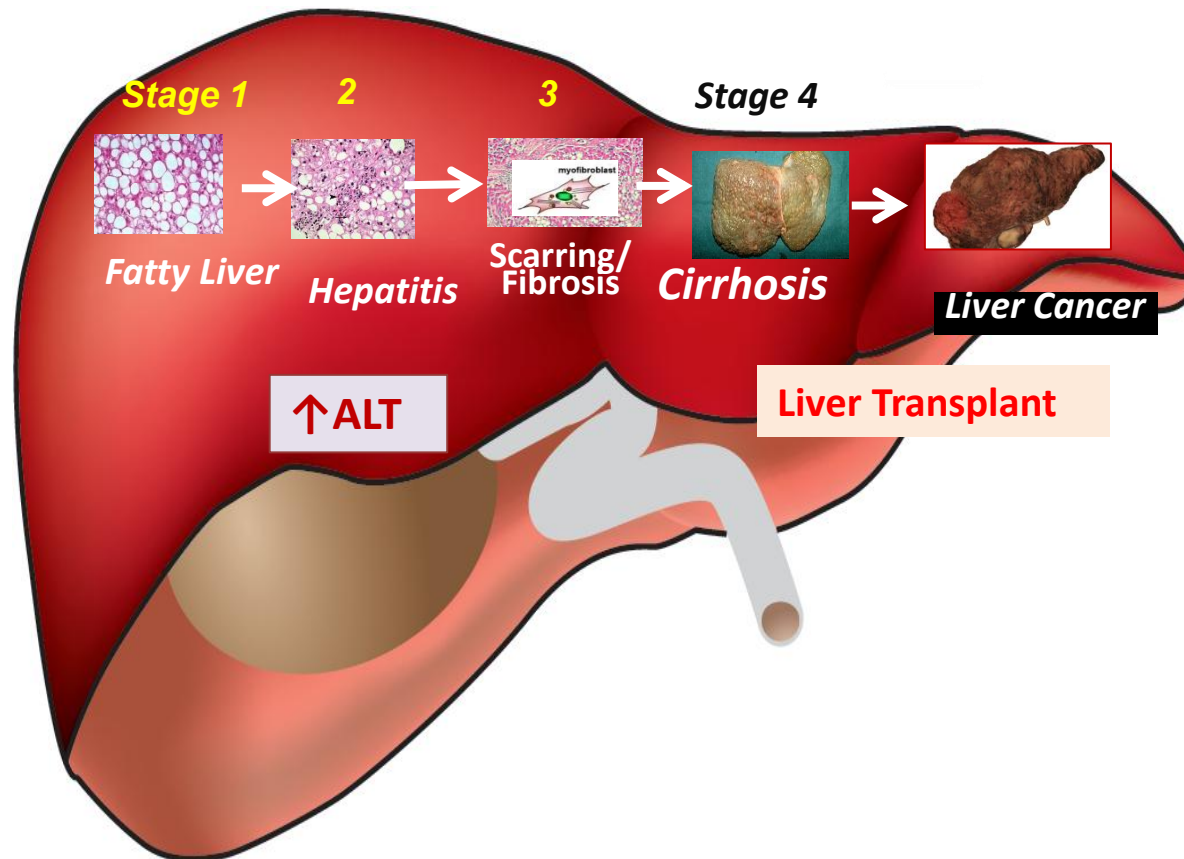
People: Fatty Liver/MASLD



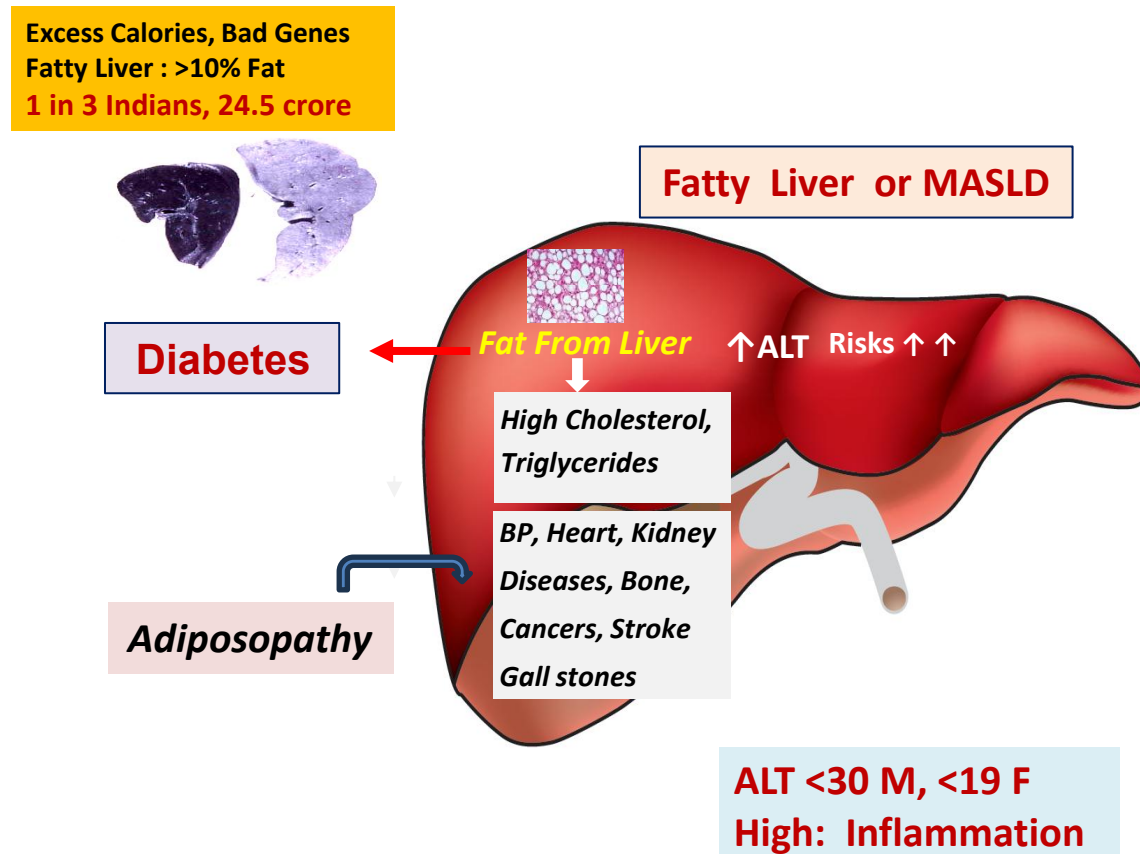
Normal Liver
<5% Fat

Calories ++,
Genes
Fatty Liver >10%
Fat

MASLD



People: Fatty Liver Core to NCDs

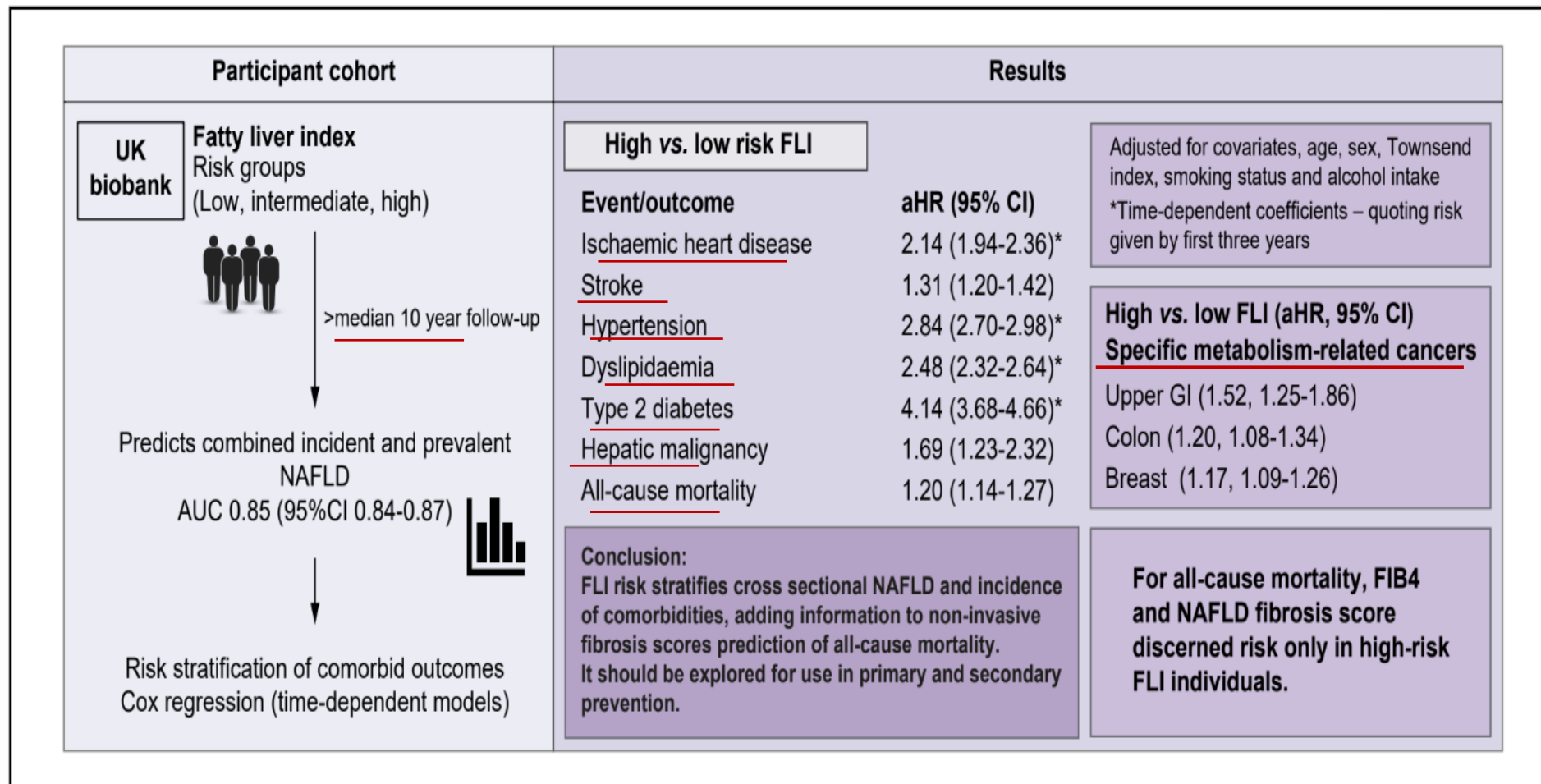


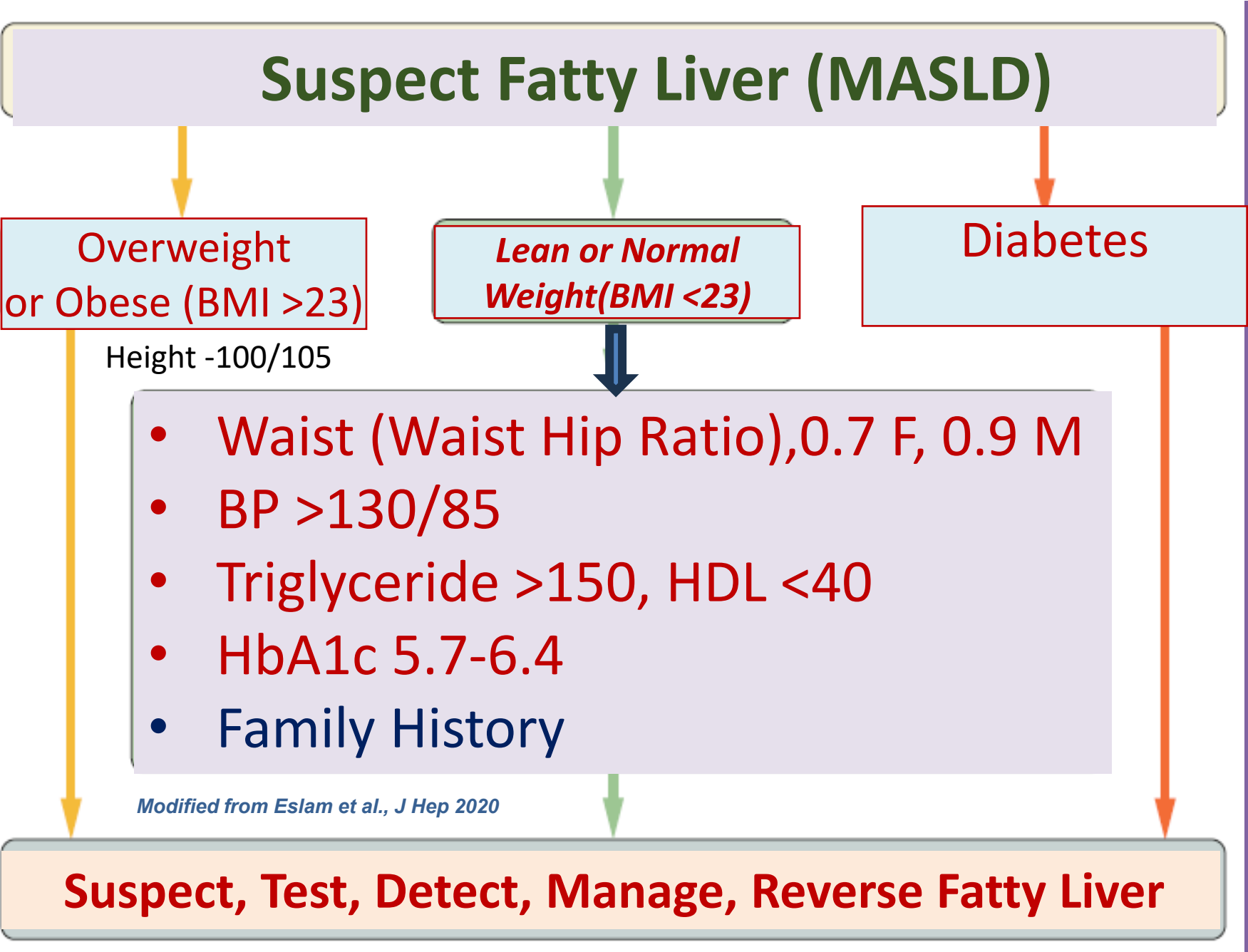
Fatty Liver is associated with Increased risk of NCDs in 3 years

Brian Ho et al. J Hep Rep 2023

UK Biobank $n = 327,800$, median age 58, 58% females

Fatty Liver Index: Body mass index, Waist, Triglycerides, gamma GT





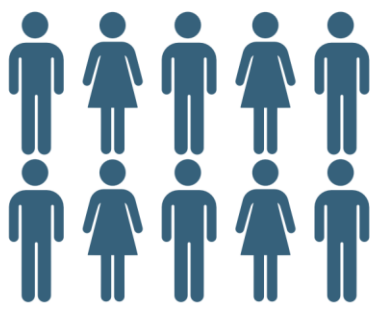
Fatty Liver

CORE to

NCDs

Top Public Health Issue

India Has 325 M
with Fatty Liver
>18 years



Diabetic
patients who
visit your clinic



8 of 10 have
MASLD

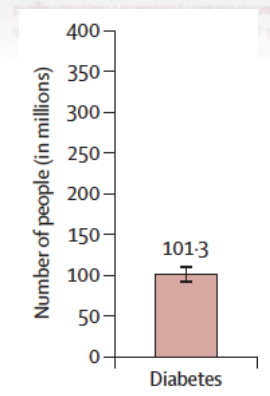


2 of 10 have
severe fibrosis
or cirrhosis

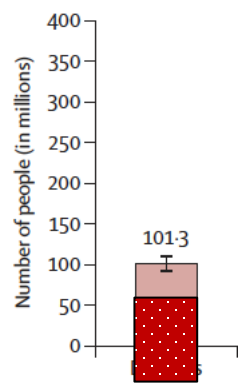


Metabolic non-communicable disease health report of India: the ICMR-INDIAB national cross-sectional study (ICMR-INDIAB-17)

Ranjit Mohan Anjana, Ranjit Unnikrishnan, Mohan Deepa, Rajendra Pradeepa, Nikhil Tandon, Ashok Kumar Das, Shashank Joshi, Sarita Bajaj, Puthiyaveetil Kottayam Jabbar, Hiranya Kumar Das, Ajoy Kumar, Vinay Kumar Dhandhanai, Anil Bhansali, Paturi Vishnu Priya Rao, Ankush Desai, Sanjay Kalra, Arvind Gupta, Ramakrishnan Lakshmy, Sri Venkata Madhu, Nirmal Elangovan, Subhankar Chowdhury, Ulagamathesan Venkatesan, Radhakrishnan Subashini, Tanvir Kaur, Rupinder Singh Dhaliwal, Viswanathan Mohan, for the ICMR-INDIAB Collaborative Study Group*



India currently
has 100 M
diabetics



India currently
has 20 M
diabetic
cirrhotics

Integration of public health measures for NAFLD into India's national programme for NCDs

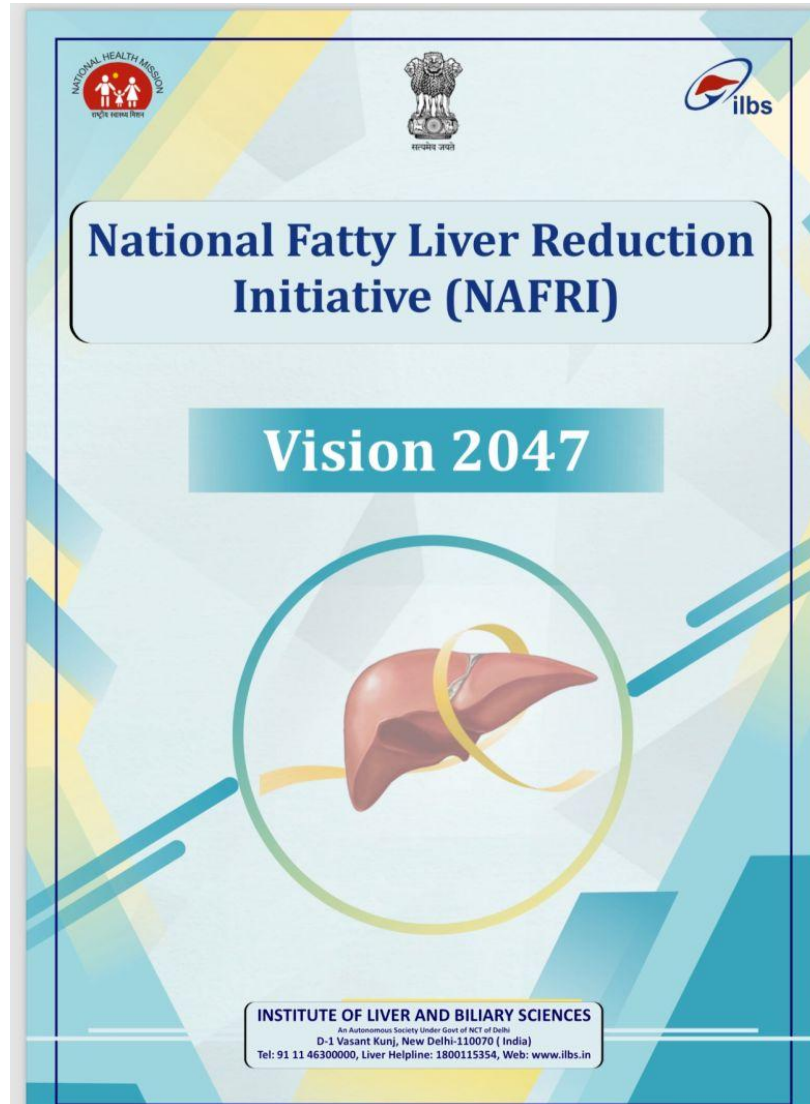
Sarin & Prasad, Lancet GH 2021

Expanding public health responses to non-communicable diseases: the NAFLD model of India

Prasad & Sarin , Lancet GH 2023

India's continued response to tackling metabolic disorders and non-communicable diseases

Prasad & Sarin , Lancet GH 2025



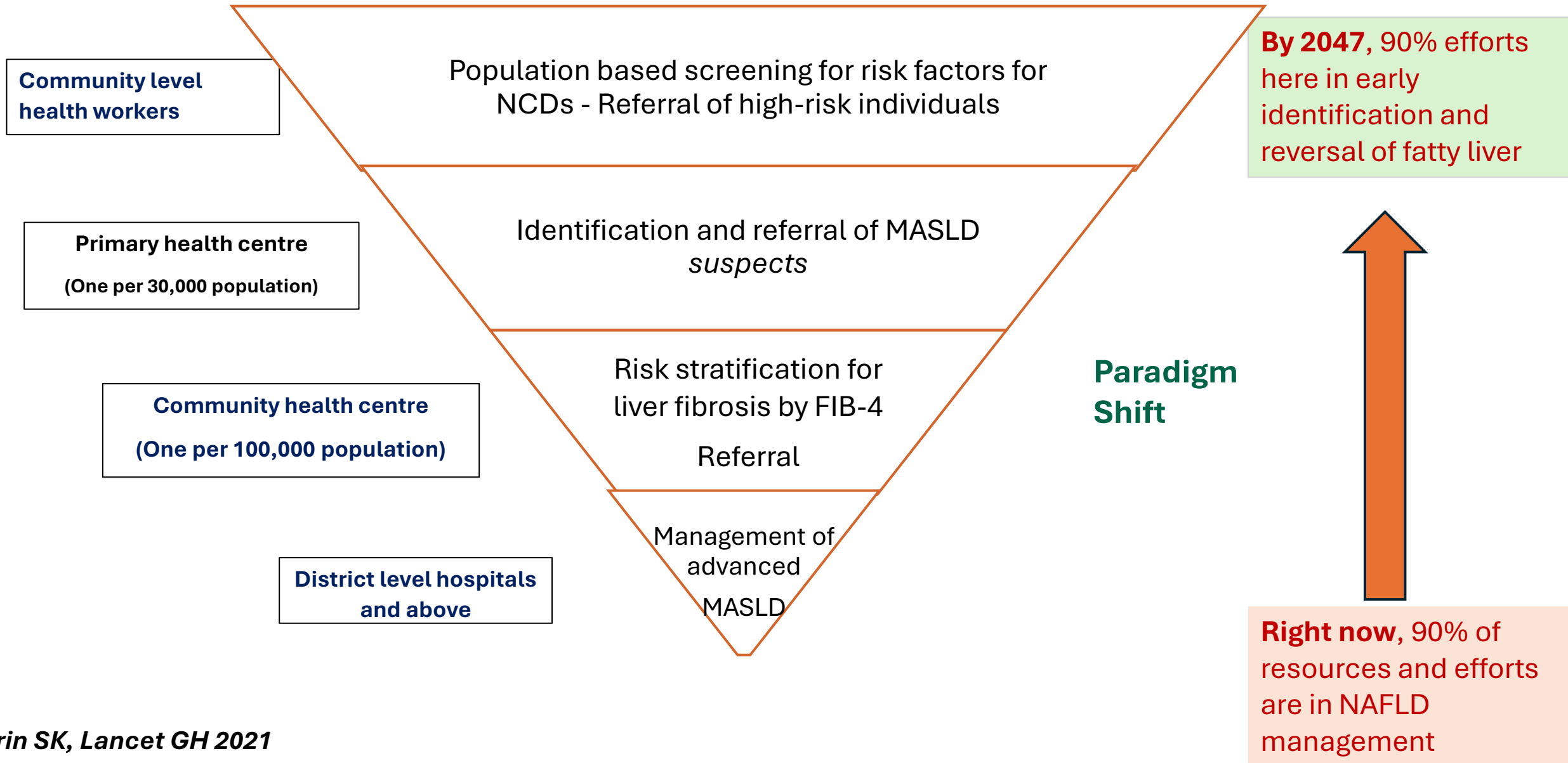
NAFRI

**Target: 50% reduction in
fatty liver prevalence
by 2047**
mitigate its ill-effects on **NCDs**

National Fatty Liver Reduction Initiative (NAFRI): Vision

Become a global model for effective non-communicable disease (NCDs) prevention and management, leading India toward a healthier and more prosperous future.

Paradigm Shift with NAFRI – The Flip of 90



Reaching to Children: All Schools to Have Mandatory Sugar Board





सत्यमेव जयते

Ministry of Health & Family Welfare
Government of India

Whole of Society Approach

Fit India, Eat Right, World Yoga Day



Implications of global policies on NCDs for patients with MASLD

- Policy Gaps in NCD guidelines
- Action by India: NAFLD in NCDs
- **Global: Outcome Measures**

Outcomes of Policies on MASLD

Taxes on sugary drinks (SSBs):

Global: SSB taxes ↑ prices ~82%, ↓ sales ~15%. Less sugar, calorie, less MASLD risk

Mexico (2014), Chile: ↓ in SSB purchase; largest in lower-income gr.

UK (2018 Soft Drinks Industry Levy): industry reformulated; ~34% reduction in sugar from soft drinks. Community diagnostics, NAFLD risk assessment

Gulf: Tiered taxes (50-100%), price rise, decreases in consumption in HIG

Front-of-pack labelling & marketing restrictions

Chile: ~24% drop in purchases of high-sugar beverages.

Singapore-Nutri-Grade (2022): grading/labels for beverages; lower sugar purchase.

Japan's "Metabo Law": Waist measurement, counselling for 40–74y at annual checkups,

India: ≤2% industrial trans-fat from 2022. **USA,** removed artificial trans-fat from food

Global Policies on NCDs for MASLD: 5 'Ps'

Patient

- Identification, Co-morbid risks, Stigma, Change life-style,
- Drugs, Cost
- 'Basket Trials' : Liver, CVD, ..
- Simple educational courses
- Involve affected populations

Public

- *Reconsider terminology Fatty liver/MASLD ?*
- Whole of society approach
- Change in behavior, life style
- Develop guidelines, policy briefs and action plans

MASLD/Fatty Liver Global Public Health Agenda

Policy

- *Reconsider terminology*
- *Fatty Liver/ MASLD: Money*
- Calculate human and economic burden of NCDs
- *Integrate ALL metabolic, NCDs with Liver*
- *Incorporate NAFLD on NCDs*
- Laws, Warnings

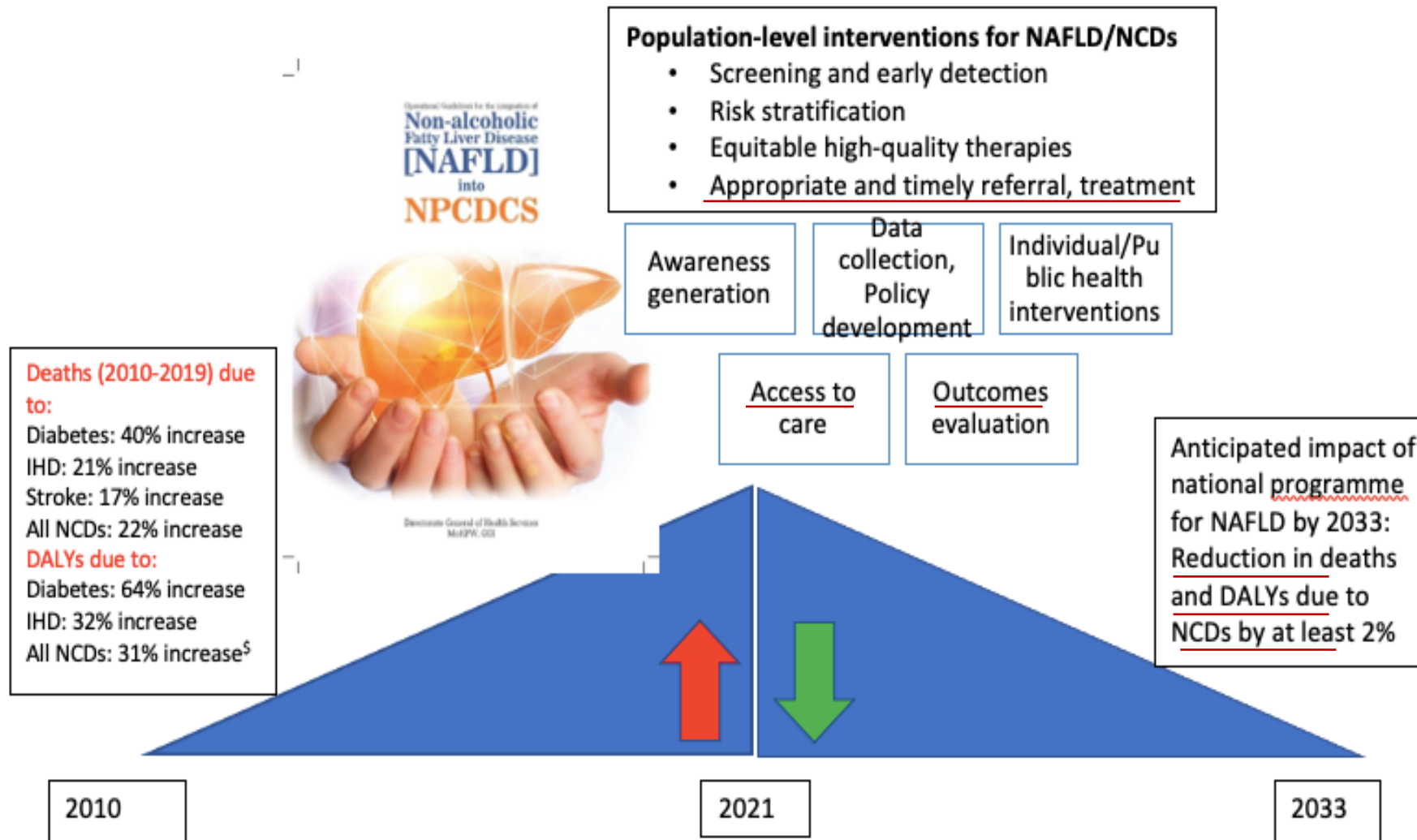
Pharma

- *Standardize trial end points*
- *Effective Rx: obesity, MASLD*
- Access
- Regional needs

Physicians

- Design and implement local care pathways
- Collaborate across disciplines,
- Develop common tools
- Implementation research

Reduction of NCDs in India: Vision 2033



Control Fatty Liver to Reduce the NCD burden